

FOR LEASE OR SALE

ROCKEFELLER GROUP LOGISTICS CENTER AT **CARNEYS POINT**

FOREST LANE, CARNEYS POINT, NJ

530,000 SF & 596,443 SF

**530,000 SF
BUILDING A**

**596,443 SF
BUILDING B**

**AVAILABLE NOW
DIVISIBLE**

ROCKEFELLERGROUPCARNEYSPOINT.COM

ROCKEFELLER
GROUP

CBRE

PROPERTY DETAILS

FOR LEASE OR SALE

**AVAILABLE NOW FOR
IMMEDIATE OCCUPANCY**

DIVISIBLE

SPECIFICATIONS

BUILDING A

BUILDING B

TOTAL BUILDING SIZE	530,000 SF (Divisible)	596,443 SF (Divisible)
BUILDING DIMENSIONS	1,060' x 500'	1,230' x 495'
OFFICE	±2,500 SF	±2,500 SF
CEILING HEIGHT	40'	40'
COLUMN SPACING	50' x 54'	50' x 54'
SPEED BAY SIZE	60'	60'
DOCK DOORS	118 (9' x 10')	127 (9' x 10')
DRIVE-IN DOORS	4	4
CAR PARKING	295 spaces	363 spaces
TRAILER PARKING	206 spaces	122 spaces
SPRINKLER	ESFR	ESFR
POWER	2,500a at 480v/3-phase	2,500a at 480v/3-phase



112 TRAILER SPACES

150 CAR SPACES

1 DRIVE IN DOOR

59 DOCK DOORS

1 DRIVE IN DOOR

OFFICE

BUILDING A
530,000 SF
AVAILABLE

1,060'

500'

1 DRIVE IN DOOR

59 DOCK DOORS

1 DRIVE IN DOOR

94 TRAILER SPACES

145 CAR SPACES

40 TRAILER SPACES

OFFICE

1 DRIVE IN DOOR

195 CAR SPACES

1 DRIVE IN DOOR

BUILDING B
596,443 SF
AVAILABLE

68 DOCK DOORS

82 TRAILER SPACES

59 DOCK DOORS

1 DRIVE IN DOOR

1,230'

495'

1 DRIVE IN DOOR

168 CAR SPACES

FOR LEASE OR SALE

AVAILABLE NOW FOR
IMMEDIATE OCCUPANCY
DIVISIBLE

FOREST LANE, CARNEYS POINT, NJ



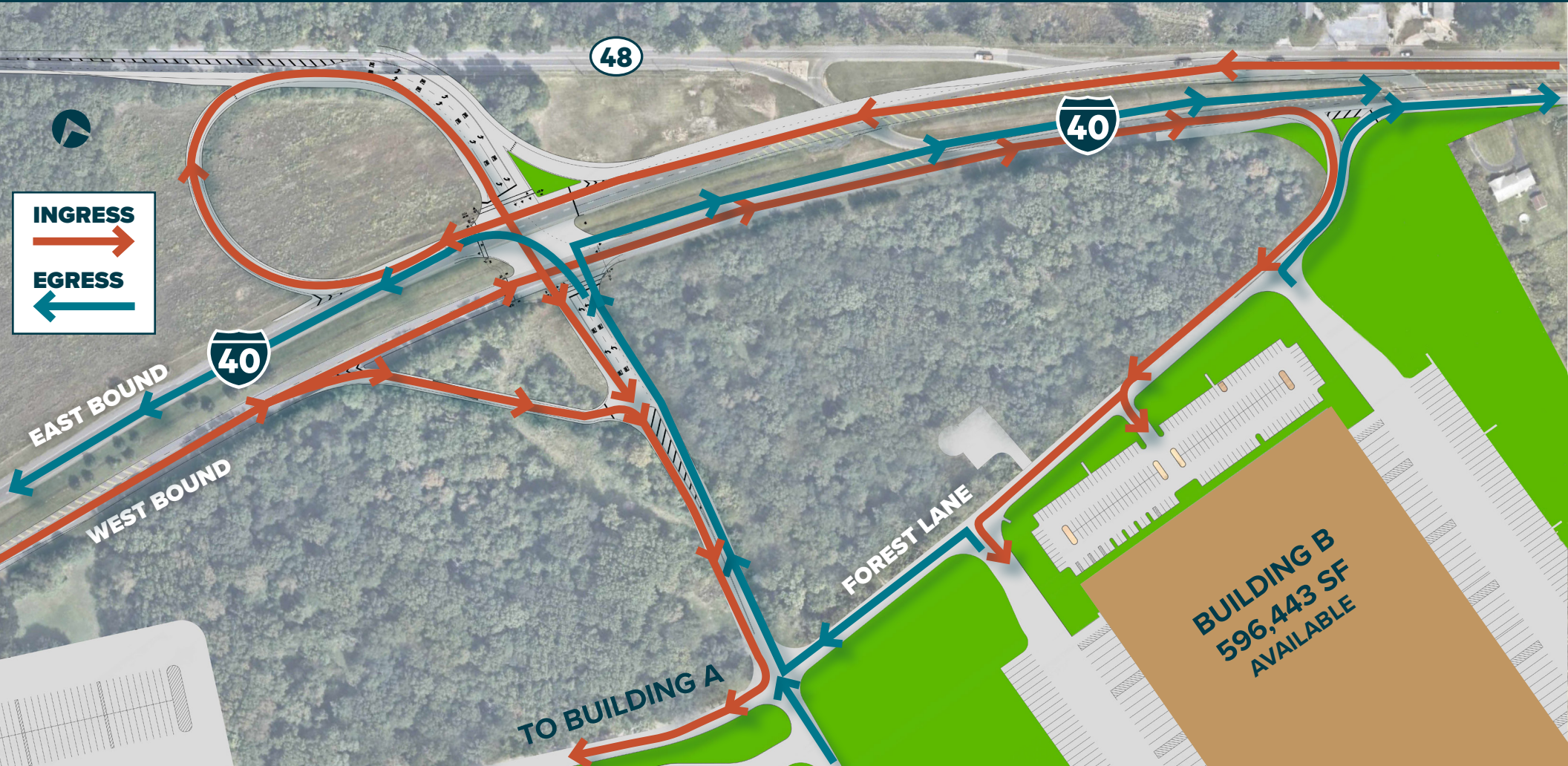
CBRE

ROADWAY IMPROVEMENTS

FOR LEASE OR SALE

AVAILABLE NOW FOR
IMMEDIATE OCCUPANCY

DIVISIBLE



I-295
EXIT 4



2.7 MILES

NJ TPKE
EXIT 1



3.5 MILES

I-295
EXIT 2B



3.8 MILES

PA

PHILADELPHIA



PHL

EXIT
4

EXIT
3



EXIT
2

295

WILMINGTON



DELAWARE
MEMORIAL
BRIDGE

EXIT
1



ILG

ROCKEFELLER GROUP LOGISTICS CENTER AT
CARNEYS POINT

**IMMEDIATE
HIGHWAY
ACCESS**

40

40

FOREST LANE, CARNEYS POINT, NJ

FOR LEASE OR SALE

**AVAILABLE NOW FOR
IMMEDIATE OCCUPANCY**

DIVISIBLE

BUILDING A





FOR LEASE OR SALE

**AVAILABLE NOW FOR
IMMEDIATE OCCUPANCY**

DIVISIBLE

BUILDING B



FOR LEASE OR SALE

ROCKEFELLER GROUP LOGISTICS CENTER AT CARNEYS POINT

FOREST LANE, CARNEYS POINT, NJ

DREW GREEN

Executive Vice President
+1 610 251 5183
andrew.green@cbre.com

THOMAS F. MONAHAN

Vice Chairman
+1 201 712 5610
thomas.monahan@cbre.com

LARRY SCHIFFENHAUS

Vice Chairman
+1 201 712 5809
larry.schiffenhaus@cbre.com

BRIAN GOLDEN

Executive Vice President
+1 201 712 5607
brian.golden@cbre.com

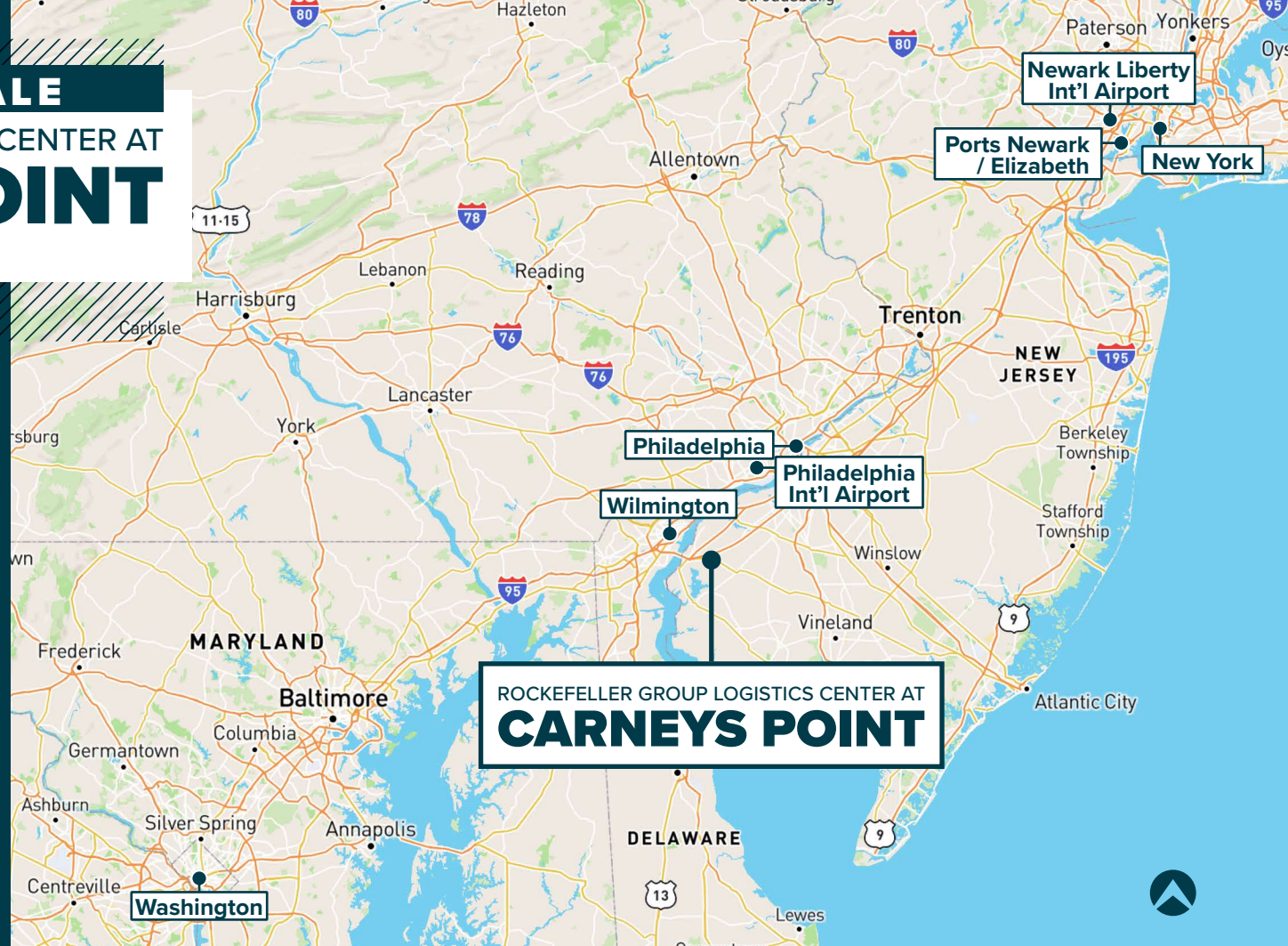


[ROCKEFELLERGROUPCARNEYSPOINT.COM](https://www.rockefellergroupcarneyspoint.com)

© 2026 CBRE, Inc. All rights reserved. This information has been obtained from sources believed reliable but has not been verified for accuracy or completeness. CBRE, Inc. makes no guarantee, representation or warranty and accepts no responsibility or liability as to the accuracy, completeness, or reliability of the information contained herein. You should conduct a careful, independent investigation of the property and verify all information. Any reliance on this information is solely at your own risk. CBRE and the CBRE logo are service marks of CBRE, Inc. All other marks displayed on this document are the property of their respective owners, and the use of such marks does not imply any affiliation with or endorsement of CBRE. Photos herein are the property of their respective owners. Use of these images without the express written consent of the owner is prohibited.

CBRE

ROCKEFELLER
GROUP



KEY DISTANCES

WILMINGTON, DE	11 MILES / 22 MIN
PHILADELPHIA INT'L AIRPORT, PA	23 MILES / 30 MIN
PHILADELPHIA, PA	34 MILES / 43 MIN
WASHINGTON, DC	115 MILES / 2 HR 14 MIN
NEW YORK CITY, NY	118 MILES / 2 HR 11 MIN
NEWARK LIBERTY INT'L AIRPORT, NJ	106 MILES / 1 HR 46 MIN
PORTS NEWARK / ELIZABETH, NJ	111 MILES / 1 HR 56 MIN

AVAILABLE NOW FOR IMMEDIATE OCCUPANCY | DIVISIBLE