

**FOR LEASE OR SALE**

# ROCKEFELLER GROUP LOGISTICS CENTER AT **CARNEYS POINT**

FOREST LANE, CARNEYS POINT, NJ

**530,000 SF & 596,443 SF**

**530,000 SF  
BUILDING A**

**596,443 SF  
BUILDING B**

**AVAILABLE  
NOW**

[ROCKEFELLERGROUPCARNEYSPOINT.COM](http://ROCKEFELLERGROUPCARNEYSPOINT.COM)

ROCKEFELLER  
GROUP

**CBRE**

# PROPERTY DETAILS

**FOR LEASE OR SALE**

**AVAILABLE NOW FOR  
IMMEDIATE OCCUPANCY**

## SPECIFICATIONS

## BUILDING A

## BUILDING B

TOTAL BUILDING SIZE	530,000 SF	596,443 SF
BUILDING DIMENSIONS	1,060' x 500'	1,230' x 495'
OFFICE	±2,500 SF	±2,500 SF
CEILING HEIGHT	40'	40'
COLUMN SPACING	50' x 54'	50' x 54'
SPEED BAY SIZE	60'	60'
DOCK DOORS	118 (9' x 10')	127 (9' x 10')
DRIVE-IN DOORS	4	4
CAR PARKING	295 spaces	363 spaces
TRAILER PARKING	206 spaces	122 spaces
SPRINKLER	ESFR	ESFR
POWER	2,500a at 480v/3-phase	2,500a at 480v/3-phase





112 TRAILER SPACES

1 DRIVE IN DOOR

59 DOCK DOORS

1 DRIVE IN DOOR

OFFICE

**BUILDING A**  
**530,000 SF**  
**AVAILABLE**

150 CAR SPACES

145 CAR SPACES

1 DRIVE IN DOOR

59 DOCK DOORS

1 DRIVE IN DOOR

1,060'

500'

94 TRAILER SPACES

195 CAR SPACES

1 DRIVE IN DOOR

40 TRAILER SPACES

OFFICE

1 DRIVE IN DOOR

**BUILDING B**  
**596,443 SF**  
**AVAILABLE**

82 TRAILER SPACES

59 DOCK DOORS

1 DRIVE IN DOOR

68 DOCK DOORS

1,230'

495'

1 DRIVE IN DOOR

168 CAR SPACES

**FOR LEASE OR SALE**

**AVAILABLE NOW FOR  
IMMEDIATE OCCUPANCY**

FOREST LANE, CARNEYS POINT, NJ



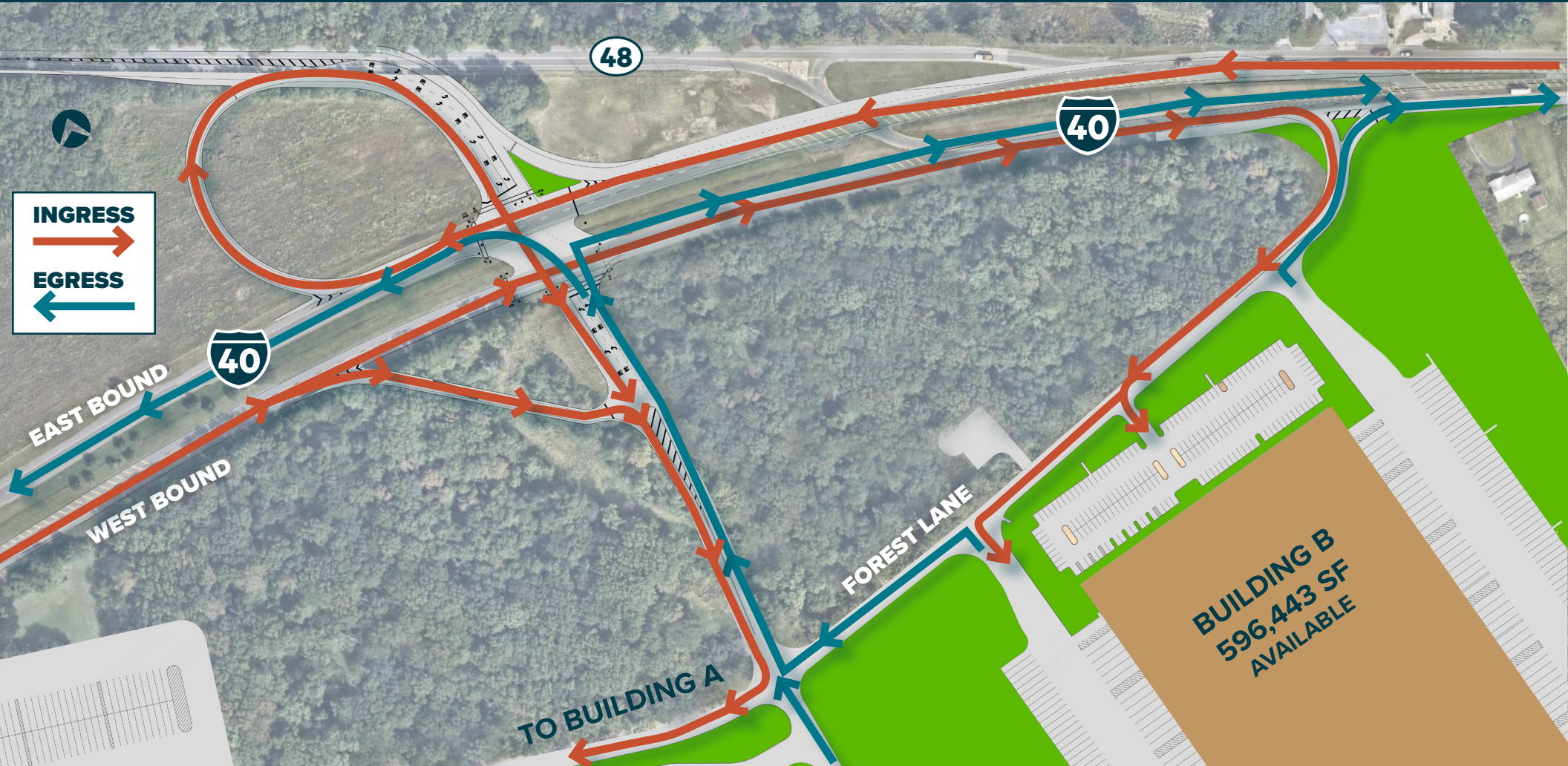
**CBRE**



# ROADWAY IMPROVEMENTS

FOR LEASE OR SALE

AVAILABLE NOW FOR  
IMMEDIATE OCCUPANCY





I-295  
EXIT 4



2.7 MILES

NJ TPKE  
EXIT 1



3.5 MILES

I-295  
EXIT 2B



3.8 MILES

PHILADELPHIA



PHL

EXIT  
4

EXIT  
3

EXIT  
2

EXIT  
1

WILMINGTON



DELAWARE  
MEMORIAL  
BRIDGE



ILG

ROCKEFELLER GROUP LOGISTICS CENTER AT  
**CARNEYS POINT**

**IMMEDIATE  
HIGHWAY  
ACCESS**

FOREST LANE, CARNEYS POINT, NJ



**FOR LEASE OR SALE**

**AVAILABLE NOW FOR  
IMMEDIATE OCCUPANCY**

**BUILDING A**







**FOR LEASE OR SALE**

**AVAILABLE NOW FOR  
IMMEDIATE OCCUPANCY**

**BUILDING B**





## FOR LEASE OR SALE

# ROCKEFELLER GROUP LOGISTICS CENTER AT CARNEYS POINT

FOREST LANE, CARNEYS POINT, NJ

### DREW GREEN

Executive Vice President  
+1 610 251 5183  
andrew.green@cbre.com

### THOMAS F. MONAHAN

Vice Chairman  
+1 201 712 5610  
thomas.monahan@cbre.com

### LARRY SCHIFFENHAUS

Executive Vice President  
+1 201 712 5809  
larry.schiffenhaus@cbre.com

### BRIAN GOLDEN

Executive Vice President  
+1 201 712 5607  
brian.golden@cbre.com

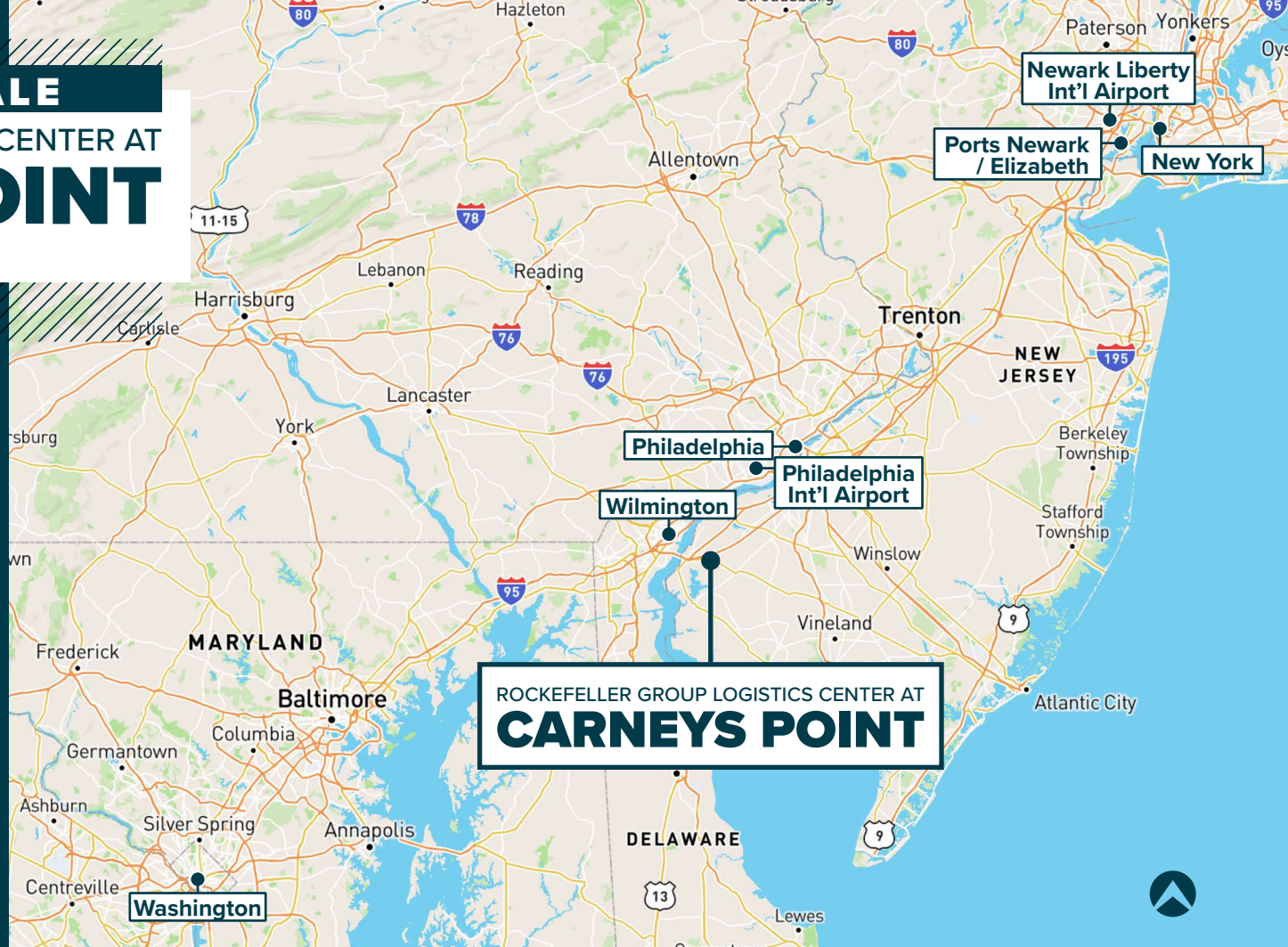


[ROCKEFELLERGROUPCARNEYSPOINT.COM](https://www.rockefellergroupcarneyspoint.com)

© 2026 CBRE, Inc. All rights reserved. This information has been obtained from sources believed reliable but has not been verified for accuracy or completeness. CBRE, Inc. makes no guarantee, representation or warranty and accepts no responsibility or liability as to the accuracy, completeness, or reliability of the information contained herein. You should conduct a careful, independent investigation of the property and verify all information. Any reliance on this information is solely at your own risk. CBRE and the CBRE logo are service marks of CBRE, Inc. All other marks displayed on this document are the property of their respective owners, and the use of such marks does not imply any affiliation with or endorsement of CBRE. Photos herein are the property of their respective owners. Use of these images without the express written consent of the owner is prohibited.

**CBRE**

ROCKEFELLER  
GROUP



## KEY DISTANCES

WILMINGTON, DE	11 MILES / 22 MIN
PHILADELPHIA INT'L AIRPORT, PA	23 MILES / 30 MIN
PHILADELPHIA, PA	34 MILES / 43 MIN
WASHINGTON, DC	115 MILES / 2 HR 14 MIN
NEW YORK CITY, NY	118 MILES / 2 HR 11 MIN
NEWARK LIBERTY INT'L AIRPORT, NJ	106 MILES / 1 HR 46 MIN
PORTS NEWARK / ELIZABETH, NJ	111 MILES / 1 HR 56 MIN

**AVAILABLE NOW FOR IMMEDIATE OCCUPANCY**